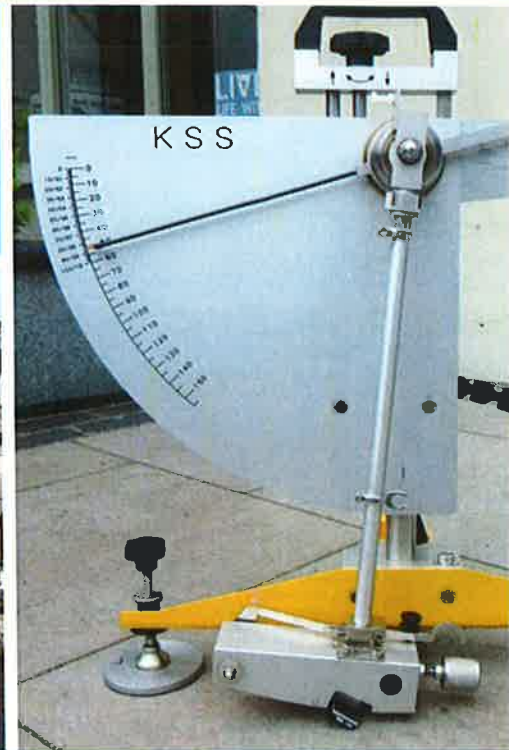


Rowan



Book of Images

Clifden Station House Hotel

THIS PAGE IS INTENTIONALLY BLANK

File Reference:
5965/FIE0001-1 Clifden Station House Hotel

Index of Images

Image 1: View on entering the hotel lobby	5
Image 2: View right on entering showing the restaurant area	5
Image 3: View left on entering showing the seating in the lobby area	6
Image 4: View of access to the Library bar, Omey Suite, and Kylemore Suite	6
Image 5: Entrance to The Library bar	7
Image 6: Access hallway leading to the Omey Suite.....	7
Image 7: Signage with directions to Omey and Kylemore Suites	8
Image 8: Access hallway to Omey Suite straight ahead	8
Image 9: Table in the hallway which contained the table plan.....	9
Image 10: Entrance to the Omey Suite	10
Image 11: View from the Omey Suite back at the approach from the lobby	11
Image 12: View of Table Nos. 2 and 4 in the Omey Suite	11
Image 13: View from the speaker's podium showing Table Nos. 3, 5, 4 & 2 (Clockwise)	12
Image 14: View showing Table Nos. 2, 3, 6 & 5 (Clockwise)	12
Image 15: View of Table No. 5 in foreground and Nos. 2, 3 and 1 in background (L-R).....	13
Image 16: View right from Judge Woulfe's seat at Table 5	13
Image 17: View forward right from Judge Woulfe's seat at Table 5.....	14
Image 18: View forward left from Judge Woulfe's seat at Table 5.....	14
Image 19: View left from Judge Woulfe's seat back towards the entrance.....	15
Image 20: View of the service route to the kitchen, through the Kylemore Suite.....	16
Image 21: Access hallway from the lobby to the Kylemore Suite – left at end of hallway	17
Image 22: Access hallway to the Kylemore Suite – left at end of hallway	17
Image 23: Entrance to the Kylemore Suite	18
Image 24: View of the Kylemore Suite which contained Table Nos. 7, 8, 9 and 10	19
Image 25: View of the Kylemore suite towards the retractable wall.....	19
Image 26: View back towards the entrance to the Kylemore Suite.....	20
Image 27: Entrance to the Kylemore Suite and kitchen access	20
Image 28: View of service route through to the Omey Suite	21

Image 29: View from Kylemore Suite with retractable wall moved to provide a central opening22

Image 30: View from Omey Suite showing the arrangement post-dinner22

Image 31: View of the opening in the retractable wall from Omey Suite.....23



Image 1: View on entering the hotel lobby



Image 2: View right on entering showing the restaurant area



Image 3: View left on entering showing the seating in the lobby area



Image 4: View of access to the Library bar, Omey Suite, and Kylemore Suite

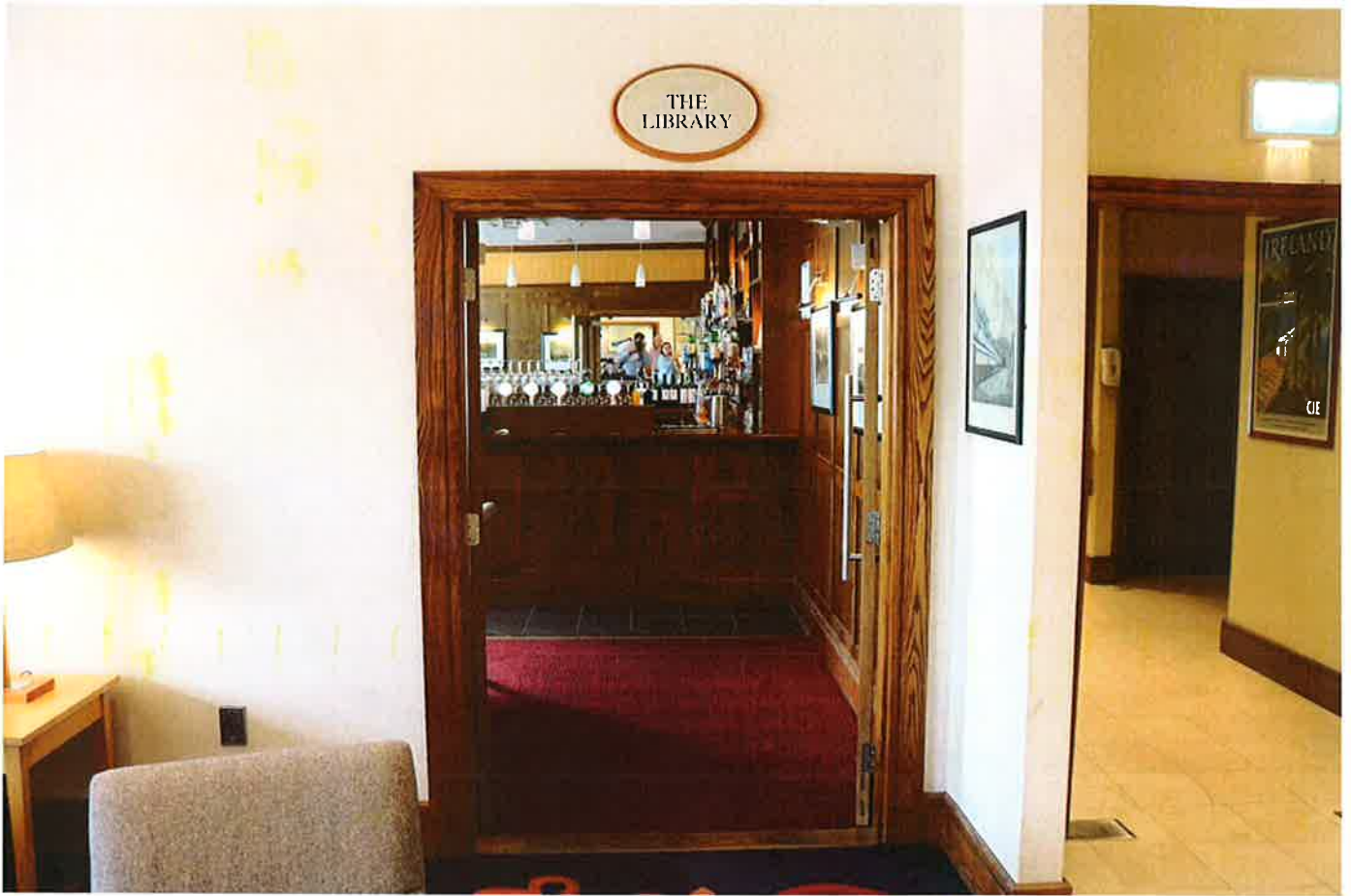


Image 5: Entrance to The Library bar



Image 6: Access hallway leading to the Omey Suite



Image 7: Signage with directions to Omev and Kylemore Suites



Image 8: Access hallway to Omev Suite straight ahead



Image 9: Table in the hallway which contained the table plan



Image 10: Entrance to the Omey Suite



Image 11: View from the Omey Suite back at the approach from the lobby



Image 12: View of Table Nos. 2 and 4 in the Omey Suite



Image 13: View from the speaker's podium showing Table Nos. 3, 5, 4 & 2 (Clockwise)



Image 14: View showing Table Nos. 2, 3, 6 & 5 (Clockwise)

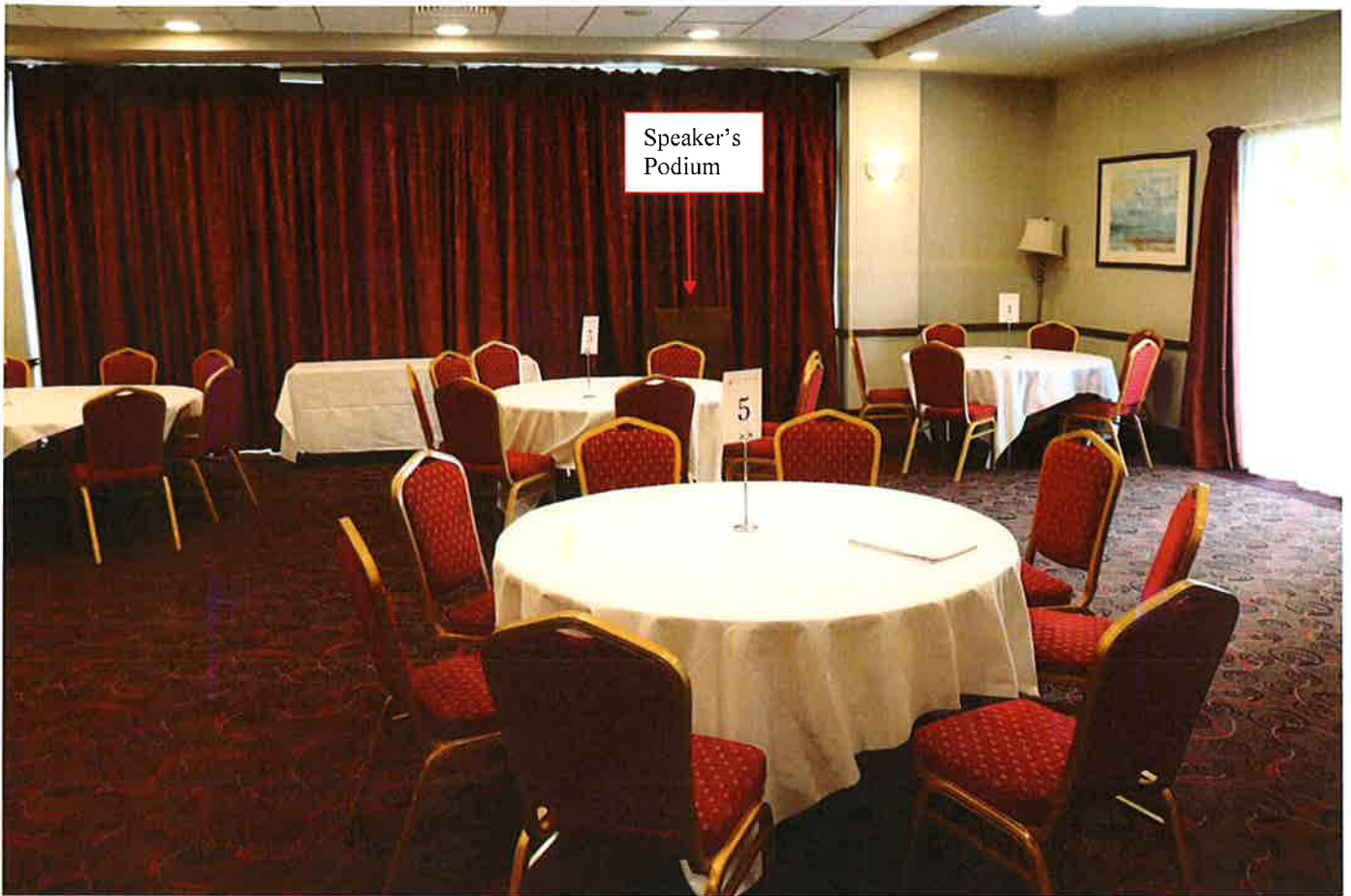


Image 15: View of Table No. 5 in foreground and Nos. 2, 3 and 1 in background (L-R)



Image 16: View right from Judge Woulfe's seat at Table 5



Image 17: View forward right from Judge Woulfe's seat at Table 5



Image 18: View forward left from Judge Woulfe's seat at Table 5



Image 19: View left from Judge Woulfe's seat back towards the entrance



Image 20: View of the service route to the kitchen, through the Kylemore Suite



Image 21: Access hallway from the lobby to the Kylemore Suite – left at end of hallway



Image 22: Access hallway to the Kylemore Suite – left at end of hallway

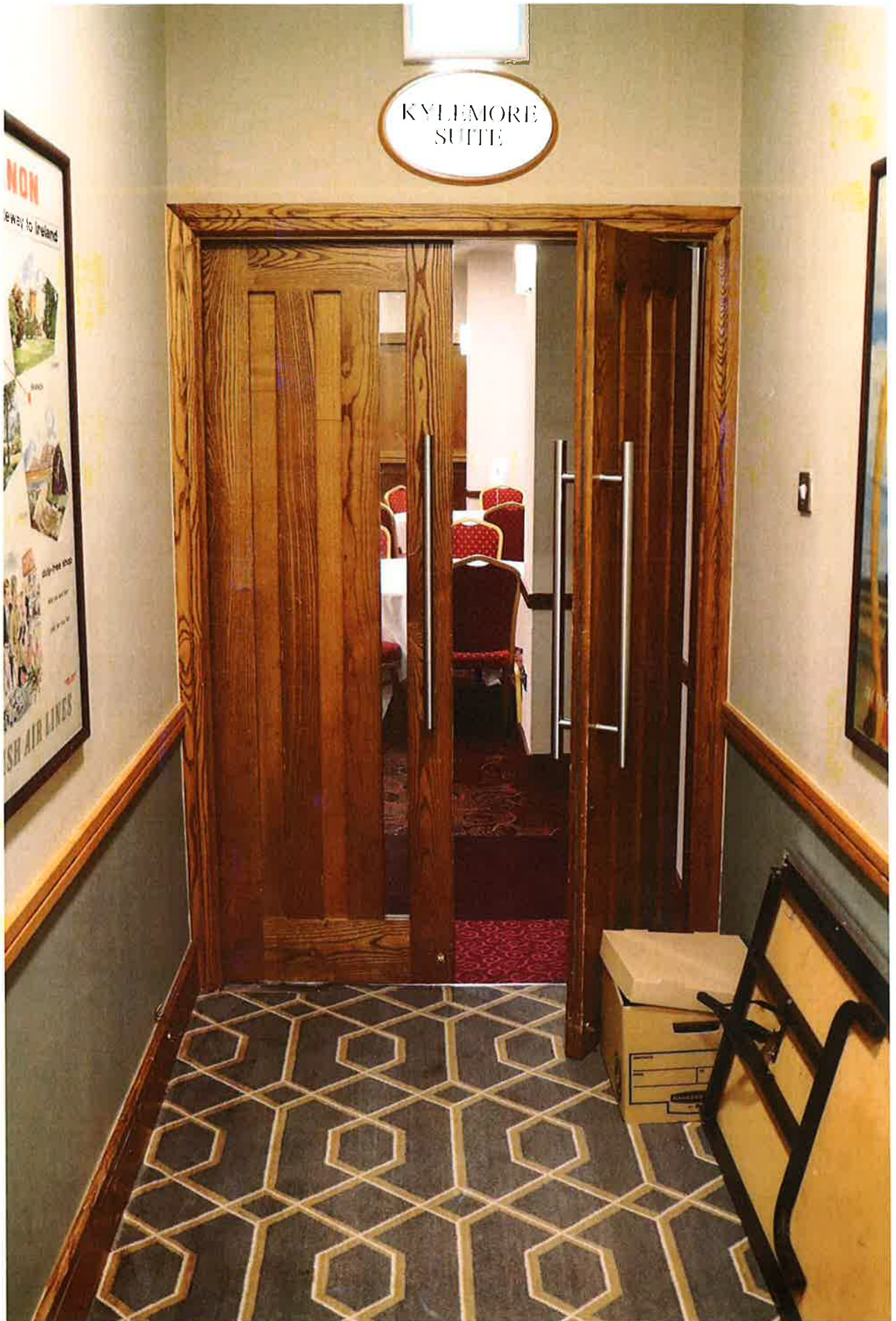


Image 23: Entrance to the Kylemore Suite



Image 24: View of the Kylemore Suite which contained Table Nos. 7, 8, 9 and 10



Image 25: View of the Kylemore suite towards the retractable wall



Image 26: View back towards the entrance to the Kylemore Suite

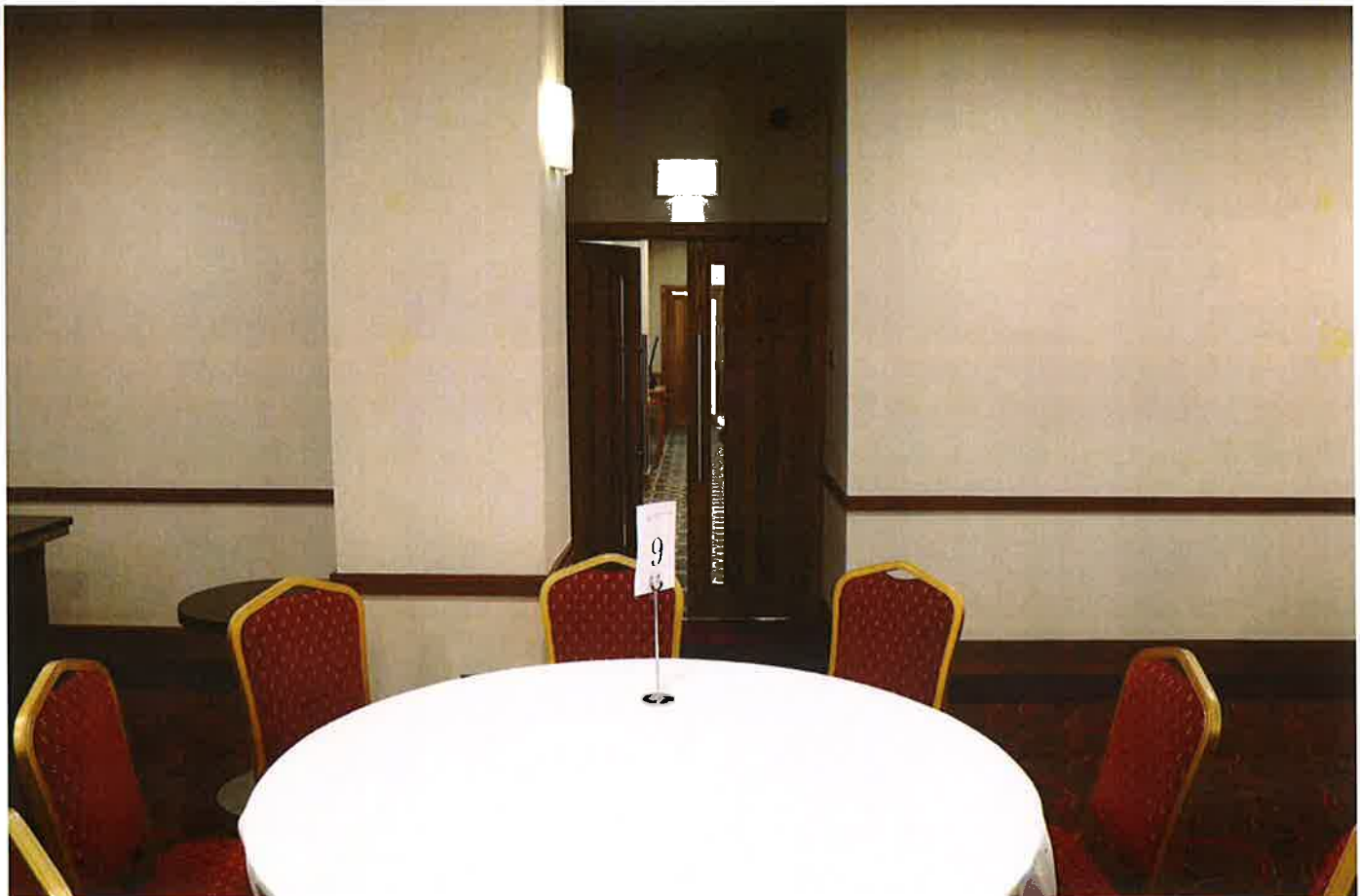


Image 27: Entrance to the Kylemore Suite and kitchen access



Image 28: View of service route through to the Omey Suite



Image 29: View from Kylemore Suite with retractable wall moved to provide a central opening



Image 30: View from Omev Suite showing the arrangement post-dinner



Image 31: View of the opening in the retractable wall from Omey Suite